



Community Engagement During COVID-19 in Chatham County!

*Bryan Thompson, MPA
Hilary Pollan, MPH, MCRP*

Wednesday, May 27th, 2020

Public Engagement

and

public Engagement

Public Engagement

PIO Team

County Manager's Office


Health Department

Sheriff's Office

Chatham County Schools

PIO Team

County Manager's Office  Lead

Health Department  Lead

Sheriff's Office

Chatham County Schools

Information Dissemination

1.
Traditional
Media

2.
Online
Media

3.
Billboards,
Banners, &
Flyers

Information Dissemination

1. Traditional Media

Proactive: News Releases and Statements

Reactive: Statements and Interviews



Information Dissemination

2. Online Media

Establish **COVID-19 webpage** on
County Website

Social Media



[HOME](#)[STAFF DIRECTORY](#)[TAX RECORDS](#)[LIBRARIES](#)[CONTACT US](#)Font Size: [+](#) [-](#)[GO](#)

CHATHAM COUNTY NORTH CAROLINA

[SERVICES](#)[ABOUT US](#)[RESIDENTS](#)[BUSINESS](#)[GOVERNMENT](#)[I WANT TO...](#)

- Health

+ About the Health Department & Feedback

[2019-2020 Seasonal Flu Information](#)[Food Assistance](#)[Dental Health](#)[Mental Health](#)[Substance Use](#)

+ School Health

+ Board of Health

+ Administration

+ Clinical Services

+ Health Promotion and Policy

+ Community Health Services

[Environmental Health](#)[Services](#) > [Health](#) >

CORONAVIRUS

Font Size: [+](#) [-](#)[+ Share & Bookmark](#)[Feedback](#)[Print](#)

COVID-19



The Chatham County Public Health Department, along with local partners, like Chatham County Emergency Management, as well as state and federal health officials, continue to coordinate planning and response efforts for any impacts to the Chatham community due to the new coronavirus, or COVID-19.

Click a button below to learn more about that topic:

[General](#)[FAQ](#)[FAQ for
Employers](#)[En
Español](#)

Information Dissemination

2. Online Media

Establish **COVID-19 webpage** on
County Website

Social Media



Information Dissemination

**3.
Billboards,
Banners, &
Flyers**

English

Spanish





If you leave home, know your Ws!

WEAR
a cloth face covering.

WAIT
6 feet apart. Avoid close contact.

WASH
your hands often or use hand sanitizer.

NCDHHS **#StayStrongNC**



Si sale de casa, recuerde las iniciales PEL!

PONERSE
un protector facial de tela.

ESPERAR
distanciándose 6 pies. Evite contacto cercano.

LAVARSE
las manos frecuentemente o bien, usar desinfectante de manos.

NCDHHS **#StayStrongNC**

STAY AT HOME ORDER

DO'S AND DON'TS



HOUSEHOLD AND FAMILY ARE NOT THE SAME

Families should not gather beyond their household



Remember to love your relatives and friends from afar. Household and family are not the same, and the Stay at Home Order means only members of a household should gather. One day, we will all come together again.

Do

Stay at home except to:

- » Buy groceries, necessities, or medicine
- » Seek medical attention, but call first!
- » Go to work if you are an essential worker who must leave the house to work
- » Get exercise, but always keep distance from others and wear a cloth face covering or mask if you go out in public

Don't

- » Visit with others unless you are their primary caregiver and are following all safety measures
- » Host or go to a party
- » Gather in groups (inside or outside)
- » Play group sports
- » Leave your house if you are sick, except for medical care (but call your doctor first!)
- » Go to work if you are sick

PERMANECER EN CASA

LO QUE SE DEBE Y NO SE DEBE HACER



HOGAR Y FAMILIA NO SON LO MISMO

Las familias no deben reunirse fuera de sus hogares



Recuerde darle amor a sus familiares a la distancia. Hogar y familia no son lo mismo, y la Orden de Quedarse en Casa significa que solo los miembros de un hogar pueden reunirse. Un día, todos volveremos a reunirnos.

Haga

Quédese en casa excepto para:

- » Compra de comestibles, artículos esenciales y medicamentos
- » Busque atención médica necesaria ¡llame primero!
- » Vaya a trabajar si usted es un trabajador esencial que debe salir de la casa para hacer el trabajo
- » Salga a hacer ejercicio, solo asegúrese de mantenerse alejado de los demás y use una tela para la cara

No Haga

- » Visitar a otros, a menos que usted sea el cuidador principal y siga todas las medidas de seguridad
- » Organizar o ir a una fiesta
- » Reunión en grupos (adentro o fuera)
- » Deportes en grupo
- » Salir de la casa si está enfermo, excepto para atención médica ¡llame primero a su médico!
- » Ir a trabajar si está enfermo

Content Focus

1. Coronavirus-specific information

Content Focus

1. Coronavirus-specific information
2. Impacts to local government, nonprofits, and businesses

CORONAVIRUS SERVICE IMPACTS

Font Size:  

 [Share & Bookmark](#)

[Feedback](#)

 [Print](#)

To limit the spread of coronavirus (COVID-19) and safeguard those most at risk for contracting the virus, **Chatham County is suspending, cancelling and adapting many government programs, services and events**. See below for an updated list of the current impacts on Chatham County government programs, services and events.

Program and Service Impacts

N.C. and Chatham County Courts

Pursuant to the NC Chief Justice's Order of March 13, 2020, Chief District Judge Joseph Buckner announced the following:

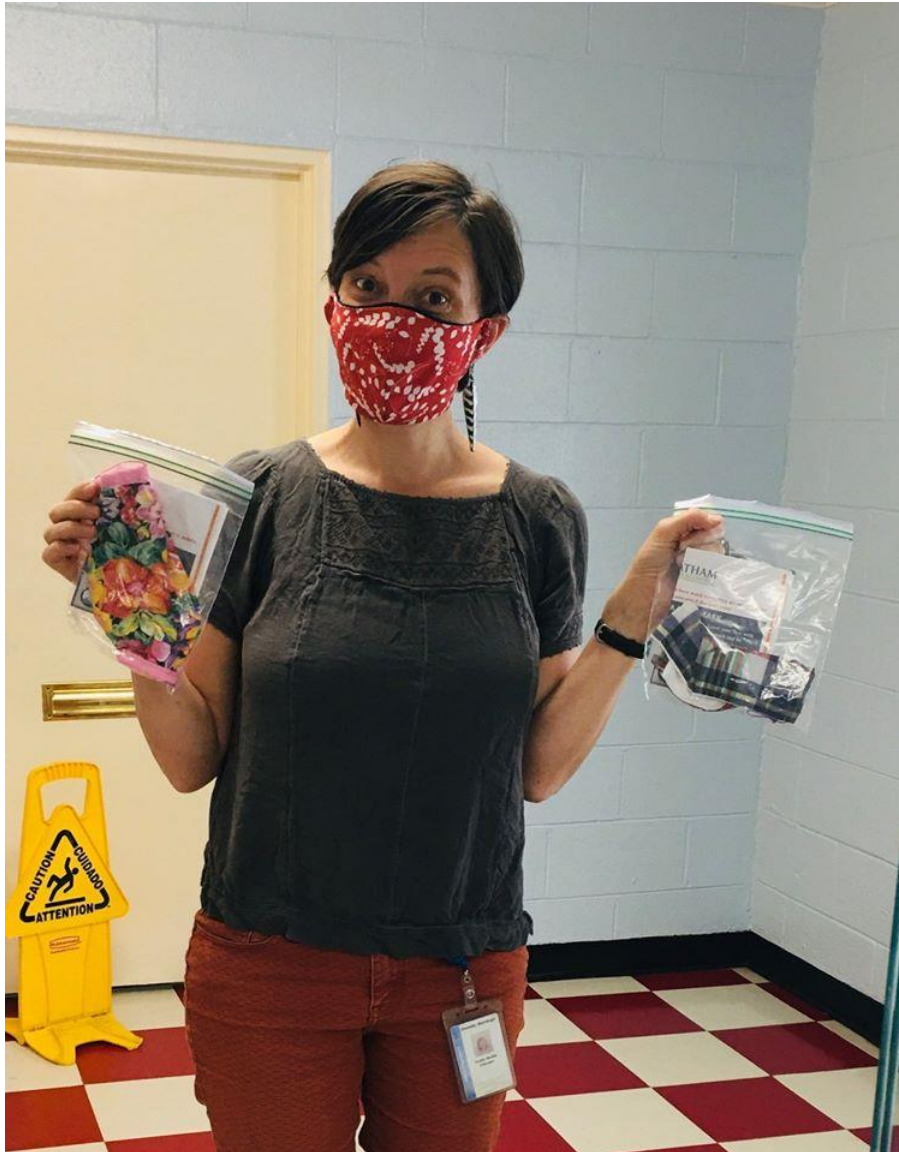
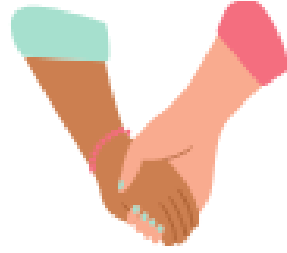
All regular sessions of district court, including small claims court, scheduled from March 16-April 17, 2020, are continued until April 20, 2020 or later dates.

The **exceptions in Chatham County** are: Chatham County criminal first appearances, bond hearings for incarcerated defendants, ex parte and other emergency orders and juvenile detention hearings shall be conducted at 10:30 a.m. at the Chatham County Justice Center in Pittsboro.

Content Focus

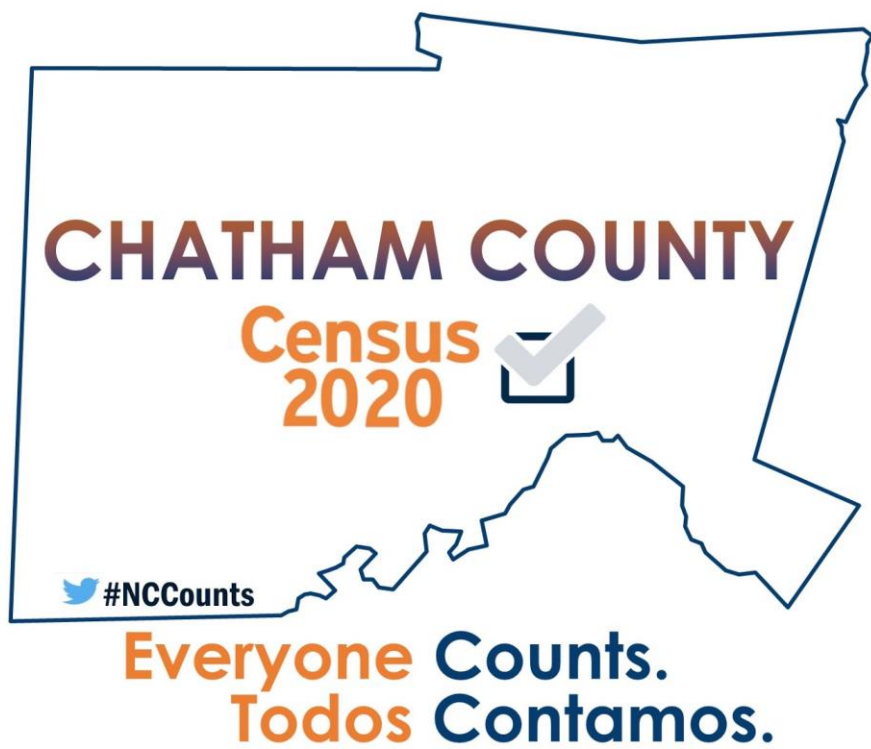
1. Coronavirus-specific information
2. Impacts to local government, nonprofits, and businesses
3. Positive COVID-related content

#ChathamTogether



Content Focus

1. Coronavirus-specific information
2. Impacts to local government, nonprofits, and businesses
3. Positive COVID-related content
4. Non-COVID content



On April 7, 2020, Chatham County employees wore blue in honor of Child Abuse Prevention Month.

public Engagement

Community Partners COVID-19 Response Call

Every week for 1-hour

Same time, Same Facilitator (Community Partners Analyst)

Dynamic agenda, driven by Community Partners' interests

40+ Weekly Attendees

One Follow Up Email with ALL links, emails, and attachments

Community Partners COVID-19 Response Call

Objective 1:
Share Updates

Objective 2:
Resource
Sharing and
Programming

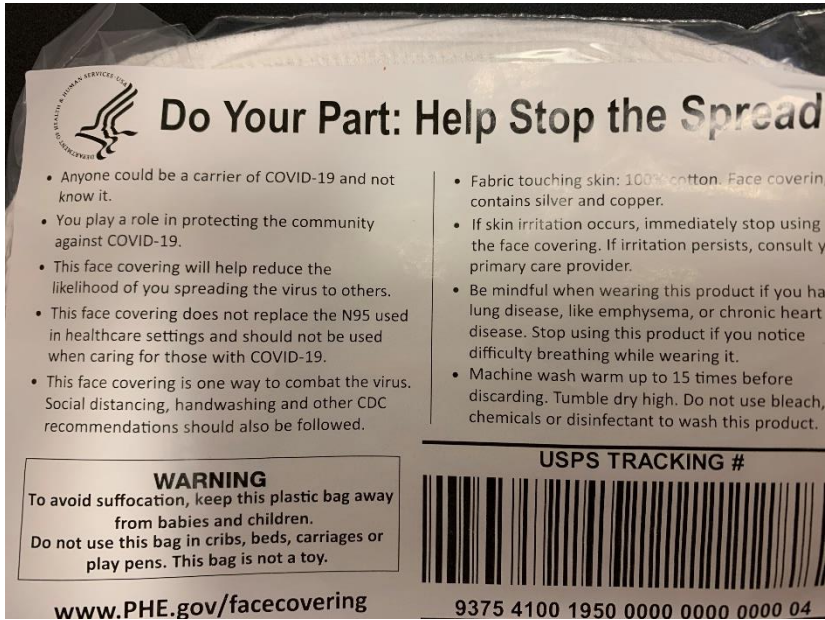
Objective 3:
Organize
Collective
Action

Community Partners COVID-19 Response Call

Objective 1:
Share Updates

County Departments: Health Department, DSS, County Manager, Council on Aging, Library, etc.

Community Partners: Human Service Nonprofit Agencies, Philanthropy, Higher Education, etc.





Reopening Your Business: A Guide to Safely Operating

File Edit View Tools Help

☆ 🗨️ ⓘ

Req



Reopening Your Business: A Guide to Safely Reopening and Operating Your Business





**CONDADO DE CHATHAM
COVID-19**
Mercado Móvil

JUNE 4, 2020
11 AM - 4 PM

GRATIS Y
ABIERTA AL
PÚBLICO

Distribución de alimentos sin contacto a
1,500 familias, incluyendo:
alimentos secos estables
comidas congeladas a la cazuela
productos frescos
folletos de recetas



Iglesia Católica Santa Julia
210 Harold Hart Road
Siler City, NC 27344



United Way of
Chatham County

[DONATE](#) [VOLUNTEER](#) [FUNDING PROCESS](#)

[NC 2-1-1](#) [Our Cause](#) [Our Impact](#) [Who We Are](#) [Annual Campaign](#) [Ways to Give](#) [Resources](#) [News](#) [Q](#)

COVID-19 Response Grants

COVID-19 Response Grants

First Grant Distribution: The response fund was created on March 20. By April 1, \$27,000 had been raised through the generous donations of Chatham County residents, businesses and local foundations. Applications were made available on April 2 and were due on April 9. On April 16, United Way of Chatham County approved the first round of grants and distributed \$27,000 to address the most critical needs of Chatham's residents, as a result of the COVID-19 pandemic.

 **UNC HEALTH**
ALLIANCE
UNC HEALTH CARE

Community Partners COVID-19 Response Call

Objective 2:
Resource
Sharing and
Programming

**Programming for Organizational
Sustainability**

Inter-Agency Share Outs

Sample Programming Topics

Emergency Paid Sick Leave, Unemployment and FMLA

Chatham County HR Director

SBA Loans, CARES Act and PPP for Nonprofits

CCCC Small Business Center Director

Organizational Sustainability Approaches: Race Don't Chace

Director of Advancement & Strategy of El Futuro

Immigrant-Centric Public Health Messaging

Executive Director of El Futuro

Sample Share Out Topics

What are you noticing as needs among your clients during COVID-19?

What is your agency to prepare for your organization's sustainability for the next 6 months?

What have been your main considerations in planning for re-opening?

Shout Out Expressions of Affirmation, Validations, Appreciation and Gratitude

Community Partners COVID-19 Response Call

Objective 3:
Organize
Collective
Action

Engage Partners in Existing Projects

Create New Projects Among Partners

MASKS for CHATHAM

A Community Drive to Protect Chatham County



PLEASE DONATE TO ONE OF OUR COMMUNITY DRIVE EFFORTS

#Masks4Medicine

DONATE TO OUR ESSENTIAL WORKERS

Get urgent protective items to frontline healthcare workers, emergency responders, childcare centers, and the Council on Aging
Please consider donating any of the following:

Latex-free gloves in unopened boxes	Respirator Masks and Filters (N95, N99, P100) All sizes in unopened boxes
Unopened containers of hand sanitizer	Toilet paper, paper towels, wipes (bleach, antibacterial), diapers, disinfectant spray
Infrared Thermometers	
Incontinence Supplies	
Disposable gowns, isolation gowns	

If you have a large donation that you would like to deliver directly to the Chatham Health Alliance, please e-mail: julie.wilkerson@chathamnc.org

#ChathamMaskMakers

DONATE TO OUR COMMUNITY

Help vulnerable populations in Chatham County, community members, and Chatham agencies that are supporting clients.
Please consider donating any of the following:

Handmade Masks	Toilet paper, paper towels, wipes (bleach, antibacterial), diapers, disinfectant spray
Latex-free gloves	
Activity Books (word searches, crossword puzzles)	Hand sanitizer

Interested in making and donating a handmade mask?
[CLICK HERE](#) to view the CDC guidelines for how to make homemade masks.

Have items you want to donate not listed above?
Chatham Connecting has put together a donation resource page [FOUND HERE](#).

Ready to Donate?

Drop-off boxes are open for donations Monday-Friday from 8am to 4pm

Donation drop-off boxes can be found at the following locations:

Chatham County Public Health Clinic:	1000 South 10th Avenue, Siler City, NC 27344
Chatham County Public Health Department:	80 East Street, Pittsboro, NC 27312
Briar Chapel Dickerson Model Home:	1342 Briar Chapel Pkwy, Chapel Hill 27516
Silk Hope Volunteer Fire Department:	8110 Silk Hope Gum Springs Rd, Siler City, NC 27344
North Chatham Station 16:	10214 US 64 East, Apex, NC 27523
Fearrington Village Gathering Place:	26 Swim & Croquet, Pittsboro, 27312

#Masks4Medicine and #ChathamMaskMakers community donation drives are sponsored by the Chatham Health Alliance in partnership with the Chatham County Public Health Department.

For questions, please contact Julie Wilkerson at julie.wilkerson@chathamnc.org

It's Chatham Spirit Week 4!

Time to show off your most wild and creative hairstyles!

Use the hashtags [#chathamspirit](#) and [#crazyhairday](#)



Fondo de Solidaridad Chatham Solidarity Fund



Chatham Organizing for Racial Equity

a collaborative fund of Chatham nonprofits
un fondo colaborativo de organizaciones en Chatham

Additional Support for Community Partners

Technical Assistance

Connections to Specific Resources and Individuals

Morale Boosting

Funding

**How are you
engaging your
Public and public?**



Bryan Thompson

Assistant County Manager

919-545-8300

bryan.thompson@chathamnc.org

Hilary Pollan

Community Partners Analyst

919-545-8408

Hilary.pollan@chathamnc.org